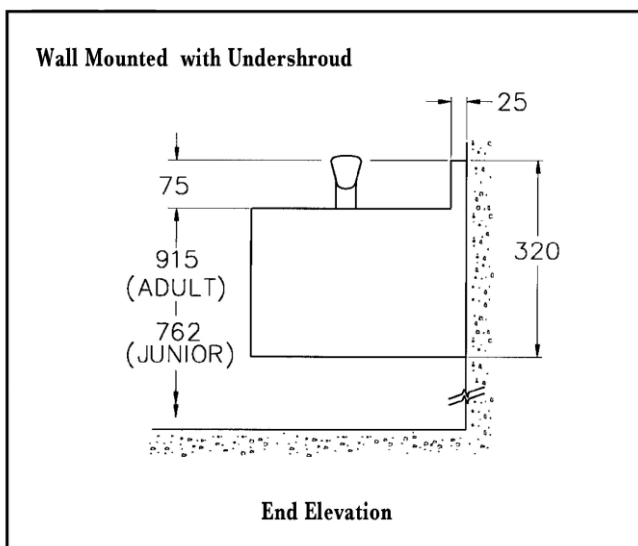
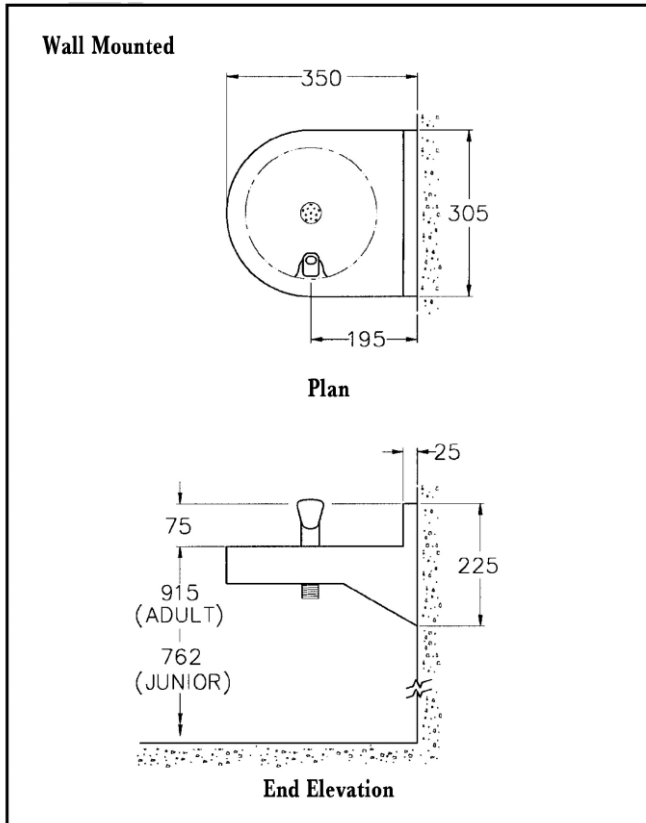


WALL MOUNTED BOTTLE FILLING FOUNTAIN

PRODUCT CODE
CWS WMBF 463

MAY 2010



Installation

The bottle filling fountain should be installed with the top edge horizontal and the edges sealed against the wall with a permanent impermeable joint.

The bottle filling fountain should be fitted to the wall at a height shown on the drawing. The wall-mounting bracket should be screwed to the wall in a horizontal position, the bottle filling fountain mounted on it, and then secured to the wall through the fixing holes at the rear of the body using suitable fasteners for the wall construction.

The flush grated waste fitting and the bottle filling spout should be fitted into the appropriate holes. The black rubber washer should be fitted over the brass inlet nipple and located into the recess in the base of the bottle filler spout body.

The bottle filling spout should be secured from underneath the fountain top using the stainless steel washer and brass nut. A coupler is provided to connect the inlet nipple to 15mm dia pipe. A suitable thread sealant approved for potable water should be used. The waste fitting should be connected to a proprietary trap and waste pipe.

Prior to final connection the water supply pipe should be flushed through to ensure that no debris is allowed to enter the bottle filling spout which may affect its performance.

Note: If shrouded model is installed use the security drive provided to remove the bottom access plate to allow installation. The plate can be re-fitted after installation is complete.

Water Flow Adjustment

The flow from the bottle filler spout has an adjustment screw which may be set to achieve the desired water flow. Undo the nut, taking care not to lose the button which fits inside the nut. Then adjust the flow rate with a screwdriver by turning the screw fitting by $\frac{1}{4}$ turns.

Earthing Continuity

All bottle filling fountains are provided with a number of fixing points on to which an earthing continuity wire with an end terminal can be secured.

Warning

If the bottle filling fountain is to be mounted outside, in accordance with good plumbing practice the supply and valve should be isolated and drained down during winter months to prevent freezing.

Unit 1, Elphicks Farm, Spelmonden Road, Horsmonden, Tonbridge. Kent TN12 8EL
Phone: 01580 211648 E-mail: info@cactuswatersystems.co.uk