

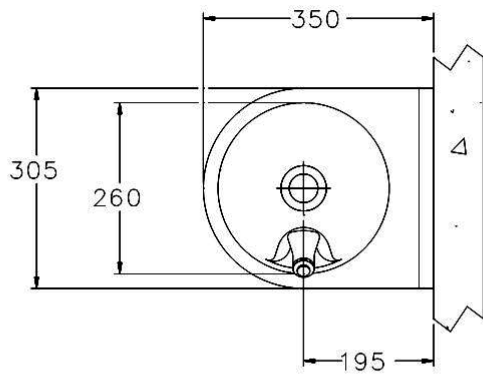
FLOOR STANDING DRINKING FOUNTAIN ADULT HEIGHT

Technical Specification

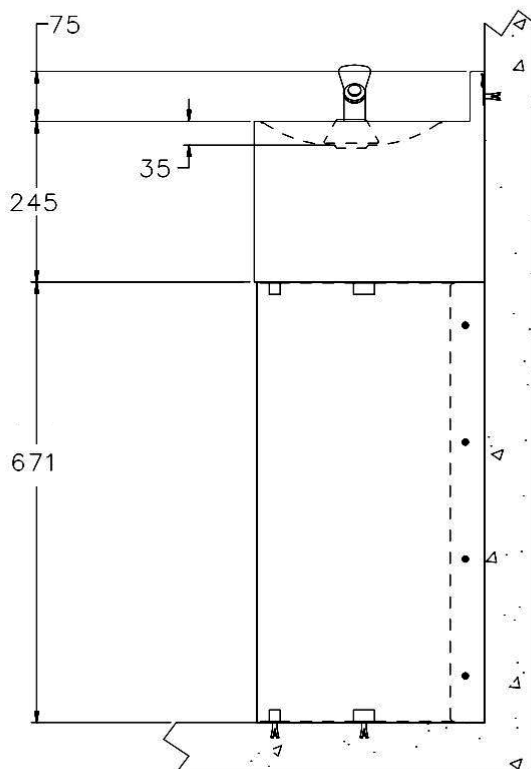
PRODUCT CODE

**CWS
FS DFA 471**

May 2016



PLAN



END ELEVATION

Waste Outlet

The drinking fountain is supplied with a 32 mm (1¹/₄ in) BSP flush grated waste fitting

Bubbler Valve

The drinking fountain is supplied with a NSF approved chrome plated shielded bubbler valve with self closing push button valve. The bubbler valve incorporates a flow adjuster and strainer and is supplied with a water inlet fitting to suit 15 mm diameter pipework.

Product Code Selection for Order or Quotation

1. Base Product Code

471 -adult height floor standing drinking fountain

For junior height model please refer to model 472

Unit 1, Elphicks Farm, Spelmonden Road, Horsmonden, Tonbridge. Kent TN12 8EL
Phone: 01580 211648 E-mail: info@cactuswatersystems.co.uk